

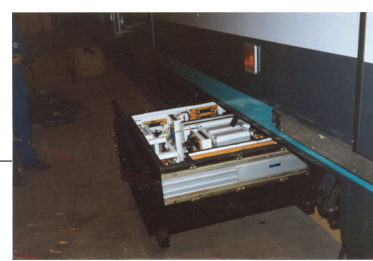
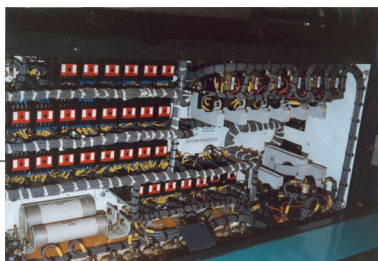
The Development of twin chopper for Manchester Metrolink

The design and development of the Metrolink low height chopper case and other auxiliary equipment cases

The design and development of the traction equipment for Manchester Metrolink for a low height easy access for street vehicle.

The equipment was supplied as part of GEC Alstom contract for the supply and maintenance of the project. The design was unique due to low height and ease of access requirement to control the traction and auxiliary packages associated with the street level and main line operating rolling stock. The auxiliary converter was the first IGBT application of its kind in UK traction industry and every component has been designed in order to minimize disturbances to the assembly when a part is required to be changed over and lowest possible MTTR.

**Client: Manchester
METROLINK
Location: Manchester**



Caspian Technology Pty
RAILWAY Division